





CORPORATE PROFILE

ALLTRANS® is a private Italian Group, funded in 1976, leader in logistics and international forwarding sectors. Our business is focused on air, sea, road transportation and logistics worldwide. Endowed with a unique capacity of blending together a dynamic network with customer friendly desk assistance. We deliver flexible solutions of dedicated logistics to worldwide customers, encompassing forwarding, warehousing, customs, project and Nvocc consolidation services.

Coming from a long history, in combination with the experience and skills of our staff, we are able to react to the swift changes of the markets and trade routes with the due flexibility, offering our clients the best planned services.



OUR VALUES

Partnership with the customer

Relations with our customers are based on trust and coincidence of common objectives, aware that the success of our Customers will favor ours.

Promoting Quality

We contribute to the development of the market level, by promoting an awareness that the adoption of measures to protect safety, environment and, in general, attention to quality are attitudes which result in advantages and increase the competitive edge and value of those companies which pursue them.

People are our asset

We assure our people a prospect of stability and security, investing in their development and professional growth, enhancing their technical skills, their ability to solve problems and to understand Clients' needs, their autonomy, in line with the Company's values



HISTORY

- 1990 – NVOCC Department begins operations.
- 1993 – Air business activity starts operations.
- 1996 – Appointment of IATA Agency is achieved..
- 1997 – Cross trade and Import divisions are started.

- 2013 – ALLTRANS joins 3PL Network.
- 2014 – China Network expansion to HK and Shenzen offices.
- 2015 – AEOF Certificate achieved.
- 2016 – China & Far East Console is started.
- 2016 – China rail Service is started.
- 2017 – India Console is started.
- 2017 – GDP certificate is achived.
- 2018 – Middle East & Gulf Console is started.
- 2019 – Bologna Office opening.

1976 - 1986

- 1976 – ALLTRANS is founded in Milan.
- 1980 – Liner agency is activated serving Milan & Livorno.
- 1985 – Project Department starts operations.

1987 - 2000

2001 - 2012

- 2002 – Relocation to new Settala terminal is accomplished
- 2005 – ALLTRANS Georgia begins its activity.
- 2006 – ALLTRANS ISO 9001 Quality certificate is achived.
- 2007 – ALLTRANS Shanghai Office is started.
- 2010 – Road Freight business unit expanding to C.I.S
- 2011 – ALLTRANS is a founding member of FFN-

2012 - 2019

2020 - Future

2020 – ALLTRANS was at the very forefront during the pandemic period, managing to deal with it in the best possible way, without ever stopping. Ready for any kind of challenge, to keep on growing and improving alongside our Customers.

Our commitment for Your Quality



www.alltrans.com



GLOBAL COVERAGE



● ALLTRANS Offices

● Network Offices



AIRFREIGHT SERVICES

We make your business fly

Thanks to a very close cooperation with several airlines and a First Class Worldwide Network, ALLTRANS is offering its customers complete door to door services.

Consolidations, DGR cargo, live animals, split charter and full charter loads, CAD/COD, proof of delivery, combined sea/air services plus packing and crating are the highlights of our airfreight division performance.

Our Milan hub, operating an internal custom section, assures fast connections from/to main Italian towns through an integration of own fleet, and domestic carriers.

Being an official IATA Agent, ALLTRANS pursues a constant professional qualification of personnel regularly attending professional training courses organized by licensed educational centers.

The infrastructure is completed by airport operation delegations at Milano (Linate /Malpensa), Rome (Fiumicino), Napoli, Turin, Venice and Florence.



CONTACTS

Airfreight Export Department
airdiv@alltrans.it

Airfreight Import Department
import@alltrans.it

Sales Department
sales@alltrans.it



MARITIME SERVICES

Your link over the oceans

ALLTRANS assures its customers, in the maritime field, a range of services in import, export and cross-trading that extends from LCL services dedicated to Project Cargo.

All the services performed are based on the use of world-class shipping companies or selected niche shipowners. A well-established high-profile relationship with the most important world carriers places us in the happy position to offer customers a wide choice of connection services between the main world markets.

The frequency of departures, the main objective of the project, allows our customers to maintain the highest flexibility in the supply chain, while operating procedures of absolute quality and the highest professionalism of our staff ensure speedy movements, low costs and maximum reliability.

CONTACTS

Seafreight Export Department
seadiv@alltrans.it

Seafreight Import Department
import@alltrans.it

Sales Department
sales@alltrans.it

www.alltrans.com





PROJECT DIVISION

Load out, transport and installation

ALLTRANS project division is expertly providing integrated turnkey projects forwarding services and large complex projects involving shipment of oversized and heavy loads.

Wherever your project is located, we shall deploy a team to plan, engineer and organize the move.



CONTACTS

Seafreight Export Department
seadiv@alltrans.it

Airfreight Export Department
airdiv@alltrans.it

Overland Department
road@alltrans.it

Import Department
import@alltrans.it

Sales Department
sales@alltrans.it



www.alltrans.com



CONSOLIDATION SERVICES

Our Milan consolidation center in Settala with its efficient structure and custom facilities, integrated by a wide range of domestic and European road services ,combined with a wide network of self-owned offices and premium quality international partners allowed us to build groupage services covering worldwide destinations such as :

DRAGON SERVICE: weekly LCL departures to cover China as well as whole South East Asia, Australia and New Zealand via Hub Singapore.

DUNES SERVICE: weekly LCL departures to Middle East, Emirates, Saudi Arabia and Arab Gulf ports via Jebel Ali Hub.

BHARAT SERVICE: weekly LCL direct departures to INDIA, port of Nhava Sheva. All other Indian destinations are served by either **Dunes** or **Dragon** services.



NVOCC

CONTACTS

Seafreight Export Department
seadiv@alltrans.it

Seafreight Import Department
import@alltrans.it

Sales Department
sales@alltrans.it

www.alltrans.com



CROSSTRADING SERVICES

One world, one market

Long before globalization, our customers in Italy and abroad were sourcing products, at times with our support, in various parts of the world for direct shipment to either transforming or consuming countries.

The worldwide expansion of our network and the evolution of transportation ways, enabled us, through the decades, to grow a large experience in the cross-trading business under the concept of “one world, one market”

Door to door services locally covered by our network assure our customers, in all their fields of activity, be it rolling material, project cargo, general cargo, full or part load, sea, air, road or rail, effective cost saving, time minimizing and real time control of all operations.



CONTACTS

Crosstrading Department
crosstrading@alltrans.it

Sales Department.
sales@alltrans.it



www.alltrans.com





OVERLAND SERVICES

With a wide network of self-owned offices and premium quality international partners, Alltrans can offer a wide range of top edge road freight transport services, which combine swiftness and reliability in an indivisible binomial.

GROUPAGE SERVICE: multiple departures each week for shipment ranging from single package to most challenging part loads. This service is granted also for ADR cargo.

DEDICATED CONSOLIDATIONS: collections from several suppliers and loading points, order consolidation in our warehouse and forwarding to final consignee.

FULL TRUCK: shipment service performed with the usage of full trucks, small trucks, road trains and vans. This service is available also for reefer\ frozen cargo and ADR cargo.

PROJECT CARGO: road freight transport of oversize and overweight shipments such big electrical transformers, industrial plants, etc. Each transport is performed with customized controls and specifically selected equipment according to cargo's needs and technical details.

CONTACTS

Overland Department
road@alltrans.it

Sales Department
sales@alltrans.it

www.alltrans.com



PHARMA & HEALTHCARE

Always at the service of Made in Italy, ALLTRANS has expressed its presence, since 1976, in the pharmaceutical & chemical sector through the shipment of import, export or cross-trade by **Air – Sea – Road – Rail**

- Chemical products
- Pharmaceutical products
- Medicinal specialties
- Raw materials and active ingredients
- Medical equipment

Deploying adequate structures and highly specialized personnel at the service of its customers, as well as an active network in more than 120 countries, we are able to manage your export and import shipments globally.

- Controlled temperature +2/+8 - +15/+25
- Dangerous Goods (DGR/IMO/ADR)
- General cargo
- Passive solutions : Cool-tainer (Envirotainer certificate)
- Reefer container
- Dedicated express services



CONTACTS

Sales Department
sales@alltrans.it



What is the pharma & Healthcare Industry?

Human medicines, medical device, diagnostic instruments, reagents, all other healthcare services such as hospitals and GDP logistics are part of the Pharma and healthcare industry.

What special services can be provided in this sector by ALLTRANS?

ALLTRANS Pharma & Healthcare services offers intuitive digital solutions, GDP certified work, temperature management, supported by highly professional skilled people worldwide.

How can ALLTRANS help you?

Our team of experts Will plan for you taylor made solutions, in accordance with your specific needs. Just trust us and we will handle your shipments from A to Z, while you can look after your other important business.

www.alltrans.com



SUSTAINABILITY

Green changes in the supply chain

Green changes in the supply chain or sustainability and green improvement initiatives are helping to make the supply chain more environmentally friendly. With a sensitivity born as a result of growing global concern about impending climate change, the shipping and forwarding industry is taking its role more seriously. Green changes in the supply chain have become necessary if not critical, as highlighted by the Paris Agreement, of which Italy is a member.

It is imperative to remember that sustainability is not only vital for the good of the environment; every euro saved, as a result of establishing and enforcing green changes in the supply chain, results in efficiency and profitability.

Shipping companies are now implementing ecological changes and adopting eco-friendly policies that govern the way they conduct their business. From work to reduce energy consumption, to carbon emissions, to the use of green packaging and the adoption of advanced warehouse management systems, paperless operations, green changes in the supply chain abound and **ALLTRANS** stays at the forefront of this development process.



CONTACTS

Mario Enrico Disegni Mr.
Managing Director
dir@alltrans.it

Roberta Bruzzese Mrs.
Quality Manager
r.bruzzese@alltrans.it





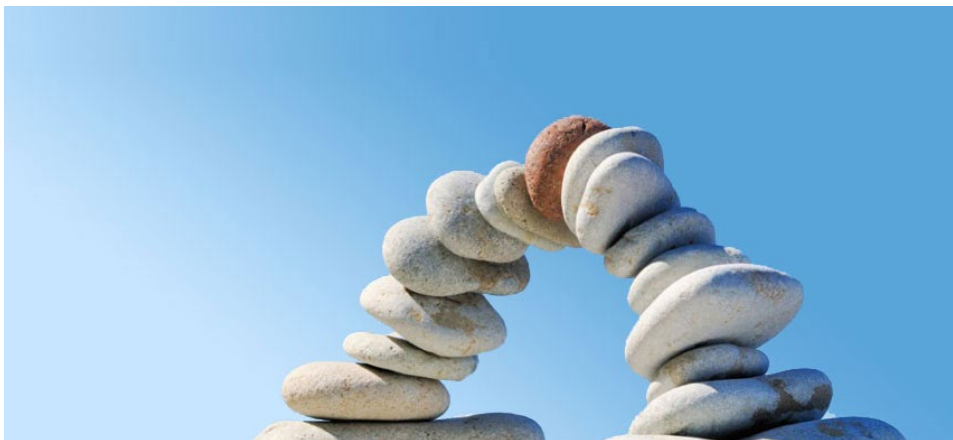
SPECIAL SERVICES

CHINA RAIL SERVICE

We provide rail freight services, through primary operators, to and from China main rail terminals offering personalized door to door LCL & FCL services. Ancillary activities of handling, warehousing, customs and distribution, are integral part of our service.

INSURANCE SERVICE

Damages ? Theft ? Average ? A competent partner at your side. As regretful as these happenings may be, they do happen as we all know and having a capable partner at your side makes things a lot easier. A consistent insurance coverage protecting your interests at an affordable cost and a professional post event recovery practice is what ALLTRANS can offer you.



CONTACTS

Import Rail Department
import@alltrans.it

Export Rail Department
road@alltrans.it

Legal & Trade Compliance
legal@alltrans.it

www.alltrans.com

Quality work since 1976



///ALLTRANS®
Relazioni esterne
For contacts please consult website

www.alltrans.com